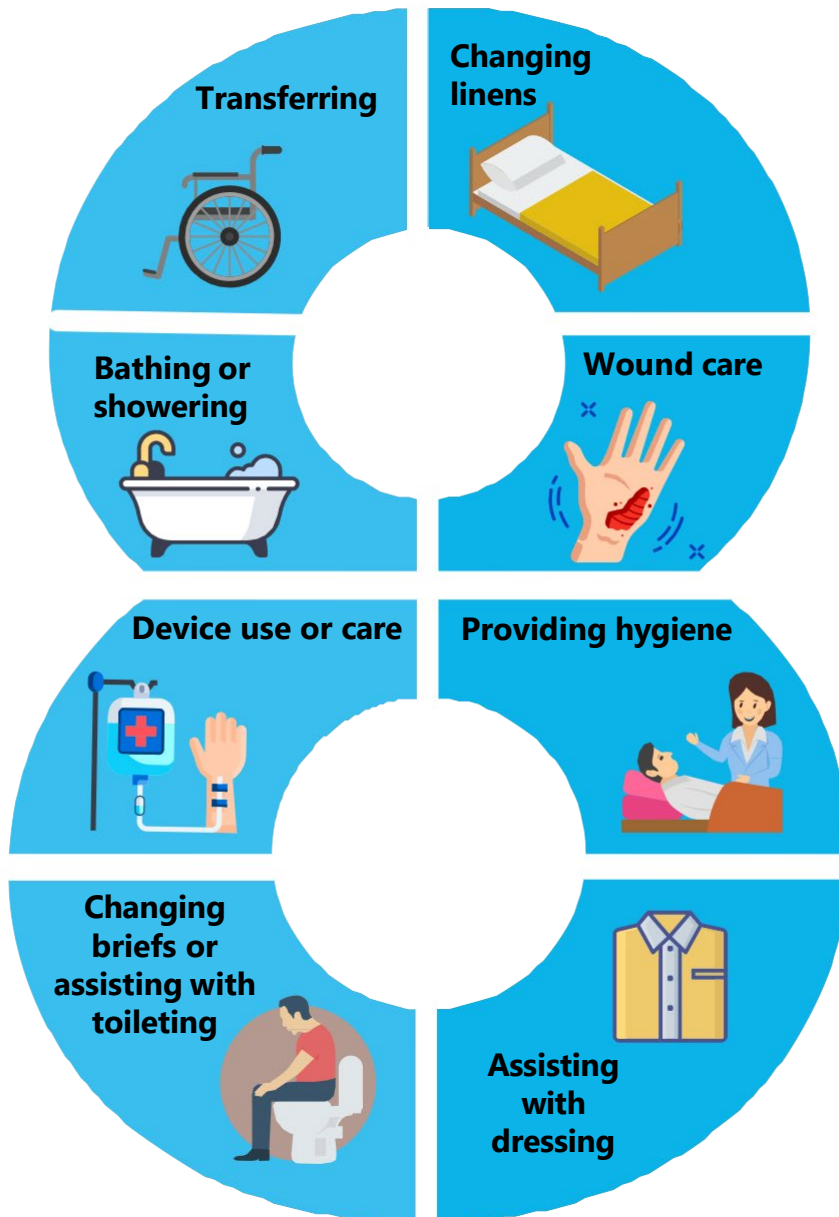
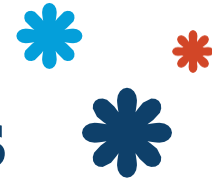
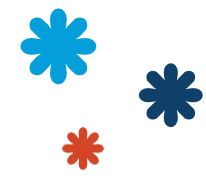


# 8 Moments of Enhanced Barrier Precautions



Everyone must:

**Perform hand hygiene before entering the room.**

Anyone participating in any of these 8 moments must also:

**Don gown and gloves.**

- Dressing
- Bathing/showering
- Transferring
- Changing linens
- Providing hygiene
- Changing briefs or assisting with toileting
- Device care or use: central line, urinary catheter, feeding tube, tracheostomy, etc.
- Wound care: any skin opening requiring a dressing, excluding minor skin tears

